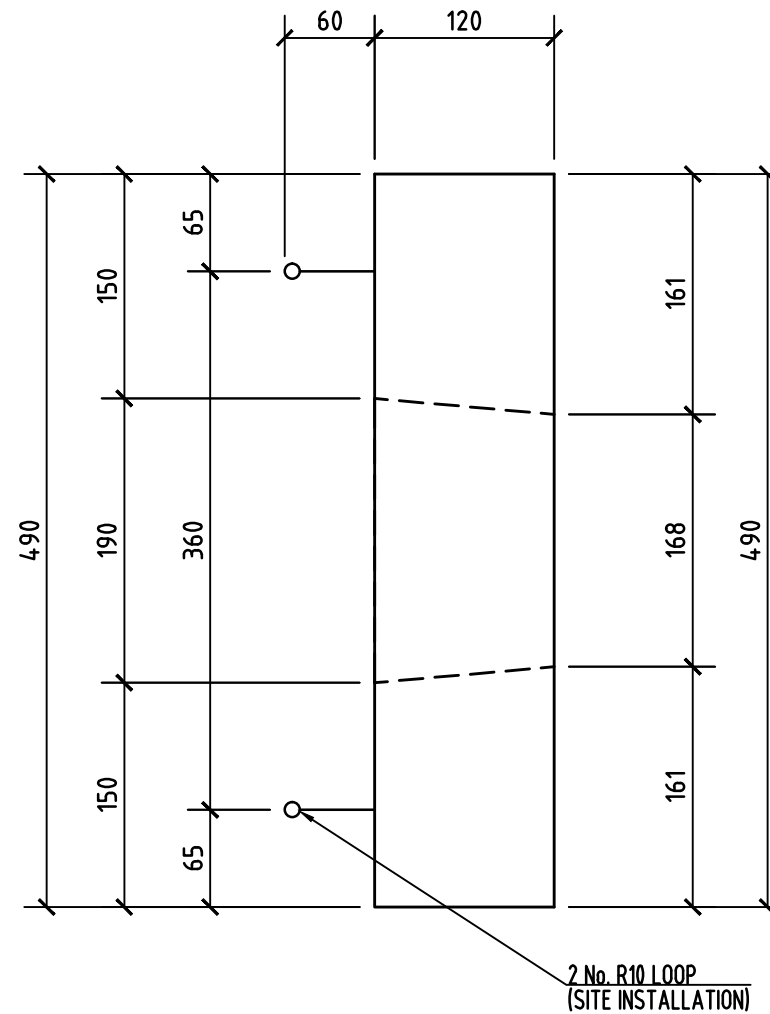
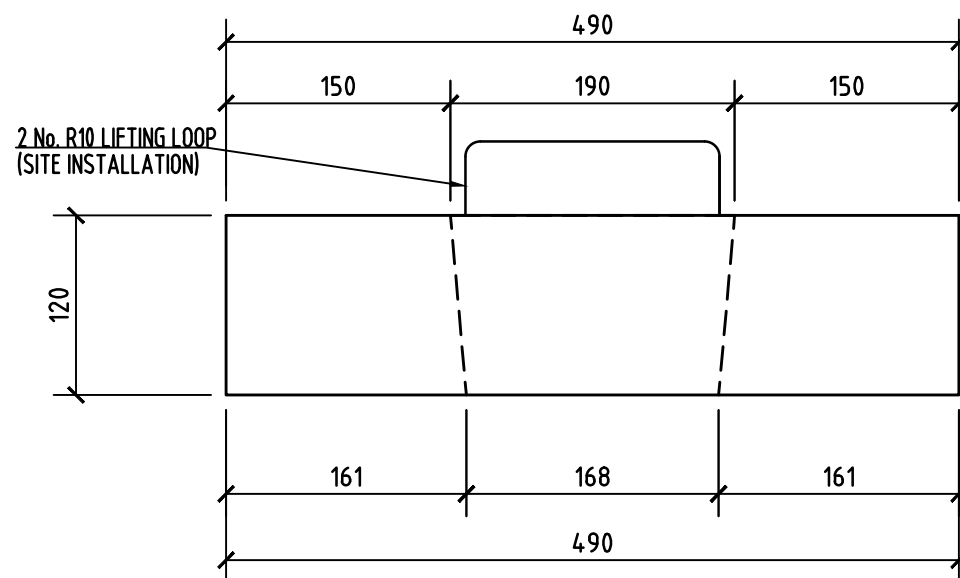


PLAN
TROWEL FACE VIEW
SCALE 1:5 - A3



SECTION A
SCALE 1:5 - A3



SECTION B
SCALE 1:5 - A3

D490LP

1 / The Precaster has allowed for lifting devices for factory use. The Builder is responsible for coordination with the persons engaged to handle the precast unit after arrival at site.

2 / Lifting, bracing and fixing of precast elements must only be undertaken by competent persons who must ensure no lifting or fastening device, including cast in items and attachments, is overloaded and load sharing devices are used where necessary.

NOTE: PLEASE COMPLETE ONE OF THE FOLLOWING

A / WE CONFIRM THAT THE DIMENSIONS AND DETAILS ON THESE DRAWINGS ARE CORRECT AND APPROVED FOR MANUFACTURE
AUTHORISED SIGNATURE:

B / WE REQUIRE THE FOLLOWING ALTERATIONS TO DIMENSIONS AND DETAILS AS PER THE MARK-UP'S PLEASE ACTION AND RESUBMIT
AUTHORISED SIGNATURE:

FOR CONSTRUCTION	04/02/2012	A
Description	Dates	Revisions



8 FRASER STREET - P.O. Box 310 - WHANGAREI 0140 - Ph 09 438 3059

Project **BUSCK ELECTRICITY PRODUCTS**
Client's Drawing

Special Notes

Concrete mix code **B42**

Specified min concrete strength **40mpa**

.014 m³ **.035** tonnes

Checked **RMc** Make **no. off**

Scale **1:5** File No. **777** Sheet **B014-01**

Drawing **SINGLE DONUT 490mmLP** **D490LP** **A**
Revision